

# **Our Disability Action Plan**

**2023–2027**

**We want to know what you think**

**An Easy Read survey**



## How to use this survey



City of Boroondara wrote this survey. When you see the word 'we', it means City of Boroondara.



We wrote this survey in an easy to read way.

We use pictures to explain some ideas.

**Bold**  
Not bold

We wrote some important words in **bold**.

This means the letters are thicker and darker.

We explain what these bold words mean.



This Easy Read survey is a summary of another survey. This means it only includes the most important ideas.



You can find the other survey on our website.

[engage.boroondara.vic.gov.au](https://engage.boroondara.vic.gov.au)



You can ask for help to read this survey.

A friend, family member or support person may be able to help you.

## Our Disability Action Plan



We are updating our Disability Action Plan.

In this survey, we just call it a Plan.



Our Plan talks about how we will make the City of Boroondara more **accessible** for people with disability.



When the community is accessible, it is easy to:

- find and use things
- travel around.



Our Plan also talks about how we will make the City of Boroondara more **inclusive** for people with disability.



When the community is inclusive, everyone:

- can take part
- feels like they belong.



We want your help to update our Plan.



We want to know how we can make the City of Boroondara more:

- accessible
- inclusive.

## How to tell us what you think



In this survey we ask you some questions.

You can answer:



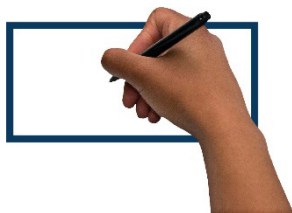
- all of the questions



- some of the questions.



We might ask you to tick a box that has the best answer for you.



We might also ask you to write an answer in a box.



You can answer these questions online.

[engage.boroondara.vic.gov.au/DAP](https://engage.boroondara.vic.gov.au/DAP)



You can also:

- print our survey and fill it out
- send your answers by mail.



Cassandra Chatwin-Smith  
Community Planning and Development  
Private Bag 1 Camberwell  
Victoria 3124



You can also:

- collect a survey from our Customer Service Counter and fill it out
- send your answers in a Reply Paid envelope.



Customer Service Counter  
8 Inglesby Road, Camberwell  
Victoria 3124





You can contact Cassandra if you need help to:

- answer our questions
- send us your answers.



You can email Cassandra.

[Cassandra.Chatwin-Smith@boroondara.vic.gov.au](mailto:Cassandra.Chatwin-Smith@boroondara.vic.gov.au)



You can call Cassandra.

**9278 4526**



If you have trouble speaking or hearing, you can use the National Relay Service.



TTY

**13 36 77**



Speak and Listen

**1300 555 727**

If you can't fill out the survey, you can share:



- a written answer



- a video



- an audio recording.



You can visit our website to learn how to do this.

[engage.boroondara.vic.gov.au/DAP](https://engage.boroondara.vic.gov.au/DAP)



## Information about you



It's important for us to understand more about our community.



This includes you.



We will keep your information:

- safe
- private.

## Questions for you to think about

### Question 1



Which of the following sentences explains who you are?



Please tick all the boxes that are true for you.  
You can tick more than one box.



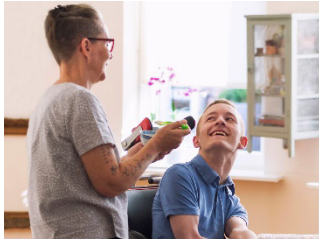
☐ I am a person with disability.



☐ I am a family member of a person with disability.



☐ I am a carer.



☐ I am a support worker.



☐ I am a teacher who works with:

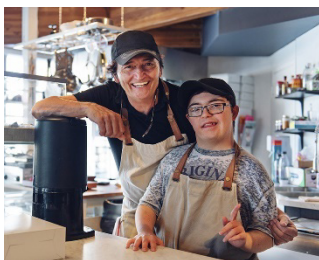
- children with disability
- young people with disability
- adults with disability.



☐ I am a disability advocate – someone who speaks up for people with disability.



☐ I am a health care worker.



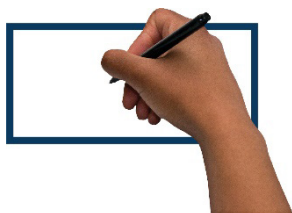
☐ I hire people with disability.



☐ I don't want to say.

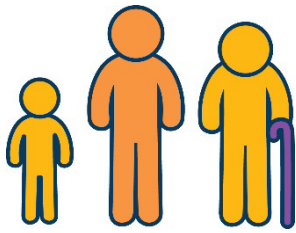


☐ I don't think any of these are true for me.

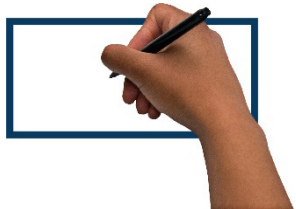


☐ I will explain who I am in the box below.

## Question 2

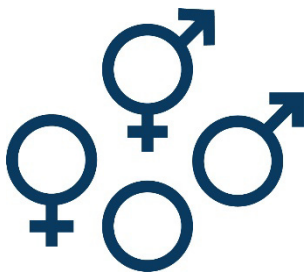


How old are you?



Please write your answer in the box below.

## Question 3



What is your **gender**?



Your gender is what you feel and understand about who you are as a person.

It isn't about whether your body is male or female.



Please tick the box that is true for you.



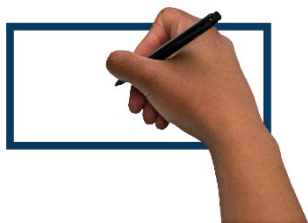
☐ I am female.



☐ I am male.



☐ I don't want to say what gender I am.



☐ I will explain my gender in the box below.

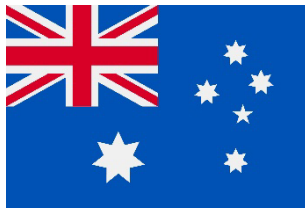
#### Question 4



What country were you born in?



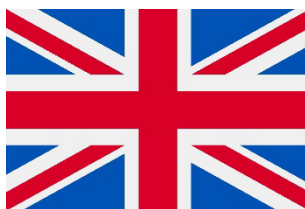
Please tick the box that is true for you.



☐ I was born in Australia.



☐ I was born in China.

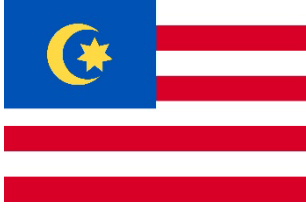


☐ I was born in the United Kingdom.

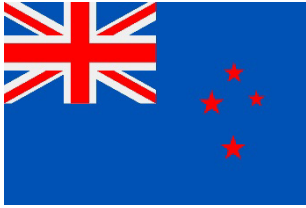


☐ I was born in India.





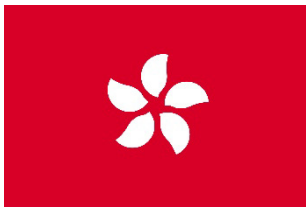
☐ I was born in Malaysia.



☐ I was born in New Zealand.



☐ I was born in Vietnam.



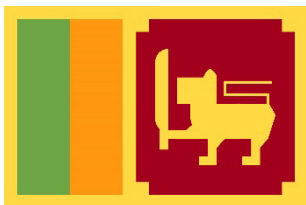
☐ I was born in Hong Kong.



☐ I was born in Greece.



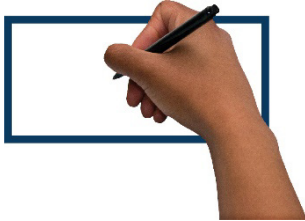
☐ I was born in Italy.



☐ I was born in Sri Lanka.



☐ I don't want to say what country I was born in.



☐ I will explain where I was born in the box below.

## Question 5



What language do you speak at home?



Please tick all the boxes that are true for you.

You can tick more than one box.

Hello

☐ I speak English.

普通话

☐ I speak Mandarin.

廣東話

☐ I speak Cantonese.

Ciao

☐ I speak Italian.

γεια σας

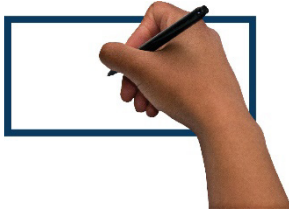
☐ I speak Greek.

Xin chào

☐ I speak Vietnamese.



☐ I don't want to say what language I speak at home.



☐ I will explain what language I speak at home in the box below.

## Question 6



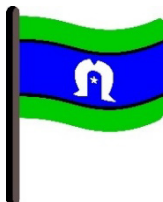
Are you Aboriginal or Torres Strait Islander?



Please tick the box that is true for you.



☐ Yes, I am Aboriginal.



☐ Yes, I am Torres Strait Islander.



☐ Yes, I am Aboriginal and  
Torres Strait Islander.

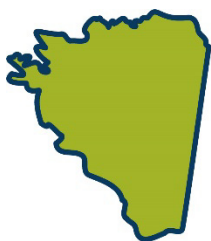


☐ I am neither Aboriginal  
or Torres Strait Islander.



☐ I don't want to say if I am Aboriginal  
or Torres Strait Islander.

## Question 7



What suburb do you live in?



Please tick the box that is true for you.

☐ I live in Ashburton.

☐ I live in Hawthorn.

☐ I live in Balwyn.

☐ I live in Hawthorn East.

☐ I live in Balwyn North.

☐ I live in Kew.

☐ I live in Camberwell.

☐ I live in Kew East.

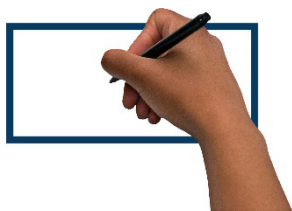
☐ I live in Canterbury.

☐ I live in Mont Albert.

☐ I live in Deepdene.

☐ I live in Surrey Hills.

☐ I live in Glen Iris.



☐ I live in a different suburb.

I will explain where I live in the box below.



## About the City of Boroondara

We want to know if the City of Boroondara is:



- accessible

and



- inclusive.



Your ideas will help us make our Plan.






Question 8




Our community is inclusive for people with disability.



Please tick the box that is true for you.

				
I strongly disagree	I disagree	Neither	I agree	I strongly agree
<input type="checkbox"/>	<input type="checkbox"/>	<input type="checkbox"/>	<input type="checkbox"/>	<input type="checkbox"/>

  
I don't know  
☐

Question 9



Our programs and services are:






- accessible for people with disability
- inclusive for people with disability.




For example, our libraries and art programs.



Please tick the box that is true for you.

				
I strongly disagree	I disagree	Neither	I agree	I strongly agree
<input type="checkbox"/>	<input type="checkbox"/>	<input type="checkbox"/>	<input type="checkbox"/>	<input type="checkbox"/>

  
I don't know  
☐

Question 10









Our website is:

- accessible
- inclusive.



Please tick the box that is true for you.

				
I strongly disagree	I disagree	Neither	I agree	I strongly agree
<input type="checkbox"/>	<input type="checkbox"/>	<input type="checkbox"/>	<input type="checkbox"/>	<input type="checkbox"/>

  
I don't know  
☐

Question 11



Our website is easy to understand.



Please tick the box that is true for you.

I strongly disagree	I disagree	Neither	I agree	I strongly agree
<input type="checkbox"/>	<input type="checkbox"/>	<input type="checkbox"/>	<input type="checkbox"/>	<input type="checkbox"/>

I don't know

☐

Question 12








How we communicate with you is:


- accessible
- inclusive.

For example, our social media.



Please tick the box that is true for you.

				
I strongly disagree	I disagree	Neither	I agree	I strongly agree
<input type="checkbox"/>	<input type="checkbox"/>	<input type="checkbox"/>	<input type="checkbox"/>	<input type="checkbox"/>

  
I don't know  
☐

### Question 13

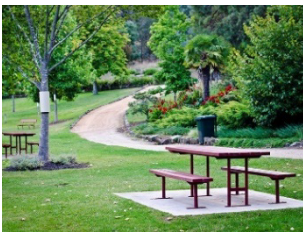
How can we make the City of Boroondara more:



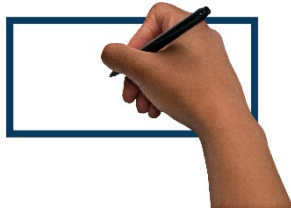
- accessible for people with disability



- inclusive for people with disability.



For example, making our parks more accessible.



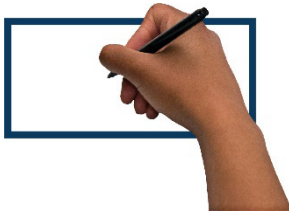
Please share your answer in the box below.



### Question 14



What stops people with disability from taking part in the City of Boroondara?



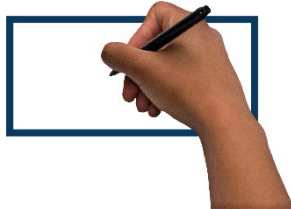
Please share your answer in the box below.

### Question 15



What are we or our community doing well to be more:

- accessible for people with disability?
- inclusive for people with disability?



Please share your answer in the box below.

## Question 16



Can we contact you if we want to ask you more questions?



If you want us to contact you, please share your:

- email address
- phone number.



My email address is:

---



My phone number is:

---

## Contact us



You can contact us if you need more information about our:

- Plan
- survey.



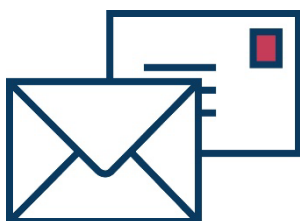
You can call us.

**9278 4444**



You can send us an email.

**[boroondara@boroondara.vic.gov.au](mailto:boroondara@boroondara.vic.gov.au)**



You can write to us.

Private Bag 1 Camberwell  
Victoria 3124



You can visit our Customer Service Counter.

8 Inglesby Road  
Camberwell VIC 3124



You can visit our website.

[www.boroondara.vic.gov.au](http://www.boroondara.vic.gov.au)



If you have trouble speaking or hearing, you can use the National Relay Service.



TTY

**13 36 77**



Speak and Listen

**1300 555 727**



The Information Access Group created this Easy Read document using stock photography and custom images. The images may not be reused without permission. For any enquiries about the images, please visit [www.informationaccessgroup.com](http://www.informationaccessgroup.com).

Quote job number 4768.